



\$675,000

- Quartz Countertops
- Hardwoods Floors
- Wine Grotto
- Built-In Desk Area



7902 S Ballantrae Dr Village of Ballantrae Stonebridge Ranch

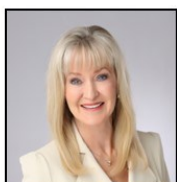
Gorgeous 1.5 Story Home in Quiet, Charming Neighborhood of Highly Sought After Stonebridge Ranch! Minutes from Shopping and Dining!

- Brick Façade with Arched Porch, Mature Trees, Lush Landscaping and Landscape Lighting
- Stunning Double Front Doors
- Soaring Ceilings and 8-foot Solid Core Doors on Main
- Private Distinguished Study with French Doors, Wall of Rich Built-Ins, Plantation Shutters and Storage Closet
- Formal Dining has Tray Ceiling and Chandelier
- Formal Living offers Double Tray Ceiling, Crown Molding, Gas Log Fireplace with Stunning Millwork and Picture Frame Window
- Built-In Desk Niche
- Inviting Family Room features See-through Gas Log Fireplace with Stunning Millwork, Plantation Shutters Crown Molding and Built-In Cabinetry
- Gourmet Kitchen has Abundance of White Cabinetry with Rich Moldings and Under Mount Lighting, Quartz Counters, Double Ovens and Butler's Pantry
- Charming Breakfast Room has Harwood Floors and Storage Window Seat
- Full Guest Bath with Pedestal Sink and Stand-Up Shower has Door to Back Patio
- Utility Room has Built-In Cabinetry, Sink and Room for Refrigerator
- Private Master Suite with Bay Window Sitting Area, Double Tray Ceiling, Plantation Shutters, Speakers and Door to Patio
- Spa-Like Master Bath has Separate Comfort Height Vanities, Jetted Tub, Separate Shower and Walk-In Closet
- Two Spacious Secondary Bedrooms
- Jack and Jill Bathroom has Separate Vanities and Jetted Walk-In Tub
- Game Room Up offers Hardwood Floors and 2 Walk-Out Attics for Storage
- Back Patio has Gas Line for Grill and Extends out Grassy Yard Surrounded by Wood Fence
- 3 Car Split, Side, Oversized Garage with Storage Closet

3 Bedrooms / 3 Baths / 2 Dining / 2 Living / Study / Game Room / Built-In Desk Area / 3 Car Garage

MLS:	14683854	Family Room:	20 x 17	Kitchen:	11 x 14	Master Suite:	19 x 15
Year:	2000	Formal Dining:	12 x 14	Breakfast:	11 x 11	Bedroom 2:	15 x 12
Lot Size:	0.21 acre	Formal Living:	17 x 12	Study:	11 x 12	Bedroom 3:	15 x 12
Square Feet:	3,763/tax					Game Room:	15 x 18/2
	McKinney ISD:	Eddins Elementary	Dowell Middle			McKinney Boyd High	

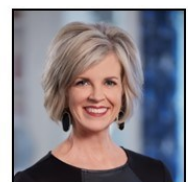
*Schools subject to verification through McKinney ISD. Client to confirm measurements.

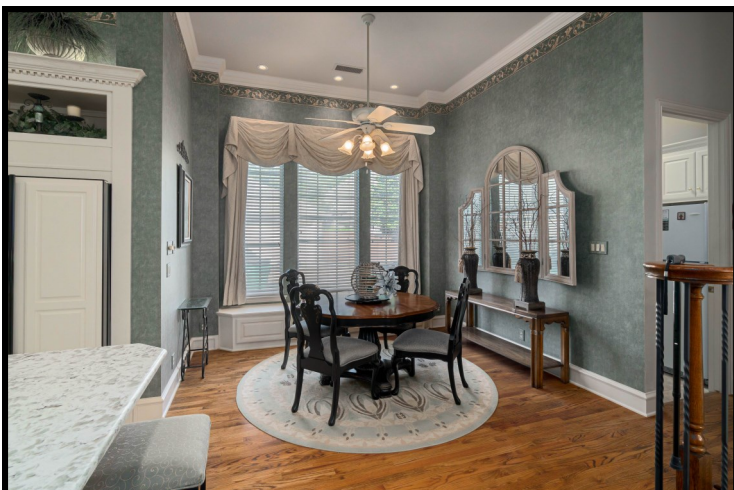
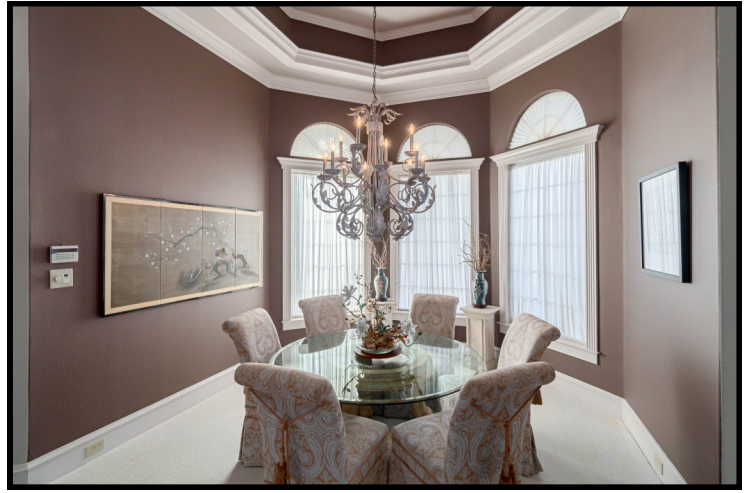


Direct: (214) 802-4680
 Office: (972) 562-8883
 jlclark@kw.com
www.JaneClarkHomes.com



Direct: (214) 738-1150
 Office: (972) 562-8883
 sonya@janeclarkrealty.com
www.JaneClarkHomes.com







7902 S Ballantrae Drive

Village of Ballantrae of Stonebridge Ranch

Stonebridge Ranch Amenities

- Sandy Beach Club
- Aquatic Community Pool
- Playgrounds & Parks
- Tennis & Sports Courts
- Scenic Lakes & Ponds
- Parks with Walking, Jogging & Bike Trails
- HOA sponsored community events: Beach Club Parties, Holiday Celebrations, Fishing & More!



Stonebridge Ranch Beach Club

- Resort Style Sandy Beach Club and Swim Lagoon
- Shady Cabanas
- Picnic Areas
- Access to Lake & Paddle Boats



Gabe Nesbitt Community Park & Athletic Complexes

- McKinney PSA Sports Complex
- Apex Center, Fitness Center & Aquatic Park
- 5 Baseball Fields lighted with grass infields & covered seating
- 5 Softball Fields lighted with covered seating
- Skate Park
- Tennis Complex
- Hike & Bike Trails and Jogging Track
- Concessions with Restrooms
- The John & Judy Gay Library

