



**\$525,000**

- **Tile Wood-Look Floors**
- **Granite Countertops**
- **Water Views**
- **Extended Covered Patio**



**4502 Sage Lane**

**North Creek Estates**

**Melissa**

***Barely Lived In, Move In Ready Beazer Home on Community Lake! Relax on the Covered Back Patio watching the Birds and Listening to the Soothing Fountain!***

- Brick Façade with Front Porch
- Walk-up Adorned with Mature Trees and Lush Landscaping
- Tile Wood Look Floors Through-Out Majority of Home
- Entry has Glass Inlaid Front Door with Wrought Iron Detailing and Tray Ceiling
- Study with French Doors, Tray Ceiling and Ceiling Fan
- Formal Dining has Tray Ceiling and Chandelier
- Open Family Room offers 12-ft Ceiling and Wall of Windows with Gorgeous Water Views
- Kitchen features Granite Countertops, Tile Backsplash, Stainless Steel Appliances, Walk-In Pantry and Breakfast Bar for Additional Seating
- Open Floorplan is Perfect for Entertaining
- Charming Breakfast Area has Chandelier and Great Natural Light
- Master Bedroom with Walk-In Closet and Tray Ceiling
- Spa Like Master Bath has Separate Vanities, Oversized Soaker Tub and Separate Shower
- Two Split Secondary Bedrooms
- Second Full Bathroom
- Utility Room for Full Size Washer and Dryer with Room for Fridge
- Shaker Doors Throughout
- Backyard Oasis features Covered Patio with Ceiling Fan and Cedar Pergola Covered 13 x 26 Extended Patio
- Grassy Back Yard with Wrought Iron Fence Overlooks Neighborhood Pond
- Oversized 3 Car Tandem Garage with Epoxy Flooring and Storage Units

**3 Bedrooms / 2 Baths / Living / 2 Dining / Study / Covered Patio / 3 Car Tandem Garage**

MLS:	20183004	Family Room:	16 x 20	Kitchen:	10 x 13	Master Suite:	12 x 17
Year Built:	2019	Formal Dining:	10 x 13	Breakfast:	11 x 12	Bedroom 2:	10 x 11
Lot Size:	0.1653 acres	Study:	10 x 12	Utility:	5 x 6	Bedroom 3:	10 x 11
Square Feet:	2,132/Tax						

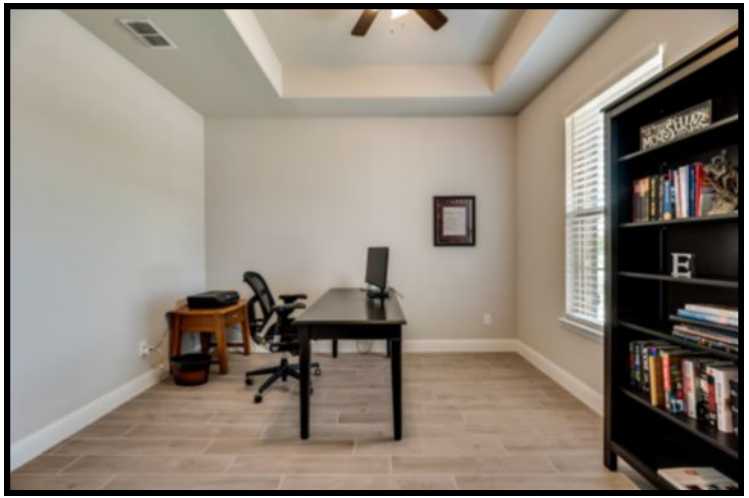
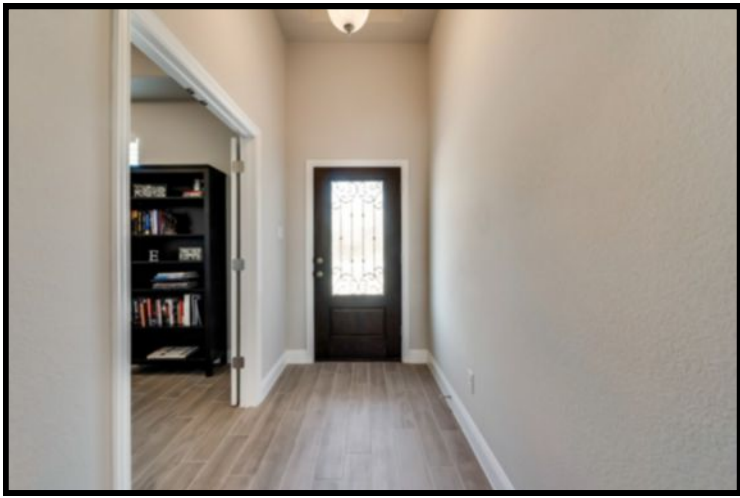
Melissa ISD: North Creek Elementary Melissa Middle Melissa High

\*Schools subject to verification through Melissa ISD



**Direct: (214) 802-4680**  
 Office: (972) 562-8883  
 Email: [jlclark@kw.com](mailto:jlclark@kw.com)  
[www.JaneClarkHomes.com](http://www.JaneClarkHomes.com)









Direct: (214) 802-4680  
Office: (972) 562-8883  
Email: [jlclark@kw.com](mailto:jlclark@kw.com)  
[www.JaneClarkHomes.com](http://www.JaneClarkHomes.com)

